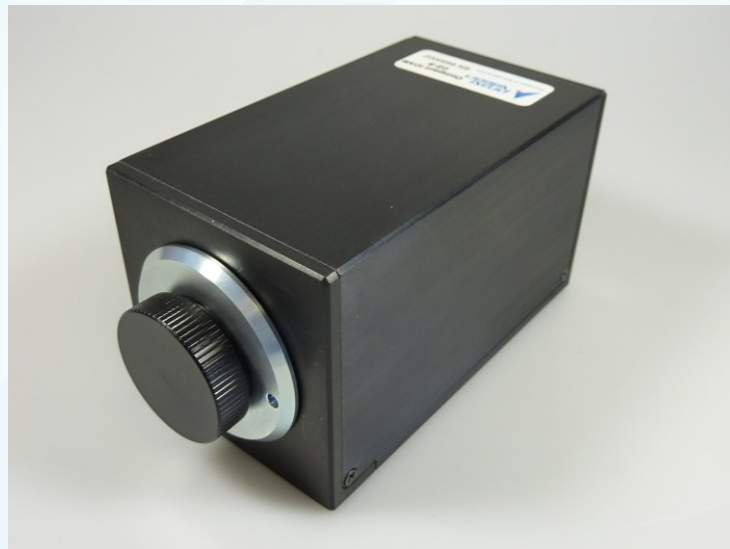


# Compact Class iCCD - Camera



*Compact iCAM*

## APPLICATIONS

- ❖ Low Light Microscopy
- ❖ Research
- ❖ Inspection
- ❖ Surveillance
- ❖ Defence
- ❖ Single UV Photon Counting
- ❖ UV to NIR

## FEATURES

- ❖ Compact Sized Intensified Camera
- ❖ Image Intensifier Integrated
- ❖ High Voltage Power Supply Integrated
- ❖ Different Image Intensifier Types
- ❖ Different Photocathodes - Covering Wide Spectral Range from 180 to 850 nm
- ❖ 1.4 MPix
- ❖ GigE



## CAMERA SPECIFICATION

Output	GigE Vision with 12-, 10-, 8-bit output
Frame Rate	up to 30 fps (full resolution)
Features	Binning, Partial Scan, Pre-Processing
Auto-Iris	Video output
Software	SDK

Lenses	C-mount 2/3" or 1"
Power supply	12 V DC + 10% approx. 500 mA

## CAMERA SENSOR

Type	CCIR 2/3"
Sensor	SONY ICX 285 progressive scan
Pixel (H x V)	1392 x 1040
Pixel size (H x V)	6.45 x 6.45 $\mu\text{m}^2$

## DIMENSIONS

Weight	ca. 650 g
Length	105 mm
Height	60 mm
Width	60 mm

## IMAGE INTENSIFIER

Active diameter	18 or 25 mm
Input window	Clear glass
Photocathode	Solar-blind, Bi-Alkali, S20, S25, for different spectral sensitivities in the range 180..850nm
Phosphor screen	P43, P46, P47
Blemish specification	Standard camera blemish specification
Coupling method to CCD	25:11 or 18:11 fiber-optical taper

Different image intensifiers types with 1 or 2 MCPs (Gen2) are available.

The high-voltage power supply is also integrated in the camera housing.

## CUSTOM DESIGN ON REQUEST

